

Surface Mount Frequency Mixer

Level 7 (LO Power +7 dBm) 1 to 600 MHz

ASK-1-KK81+ ASK-1-KK81



CASE STYLE: KK81

Maximum Ratings

Operating Temperature	-40°C to 85°C
Storage Temperature	-55°C to 100°C
RF Power	50mW
IF Current	40mA
Permanent damage may occur if any of these limits are exceeded.	

Pin Connections

LO	1
RF	4
IF	5
GROUND	2,3,6

Features

- low conversion loss, 5.58 dB typ.
- good L-R isolation, 35 dB typ.

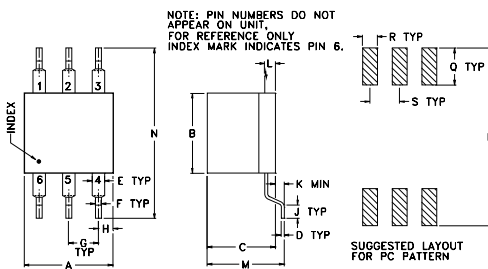
Applications

- HF/VHF/UHF
- FM radio
- federal & defense communications

+RoHS Compliant

The +Suffix identifies RoHS Compliance. See our web site for RoHS Compliance methodologies and qualifications

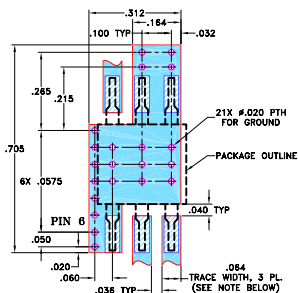
Outline Drawing



Outline Dimensions (inch/mm)

A	B	C	D	E	F	G	H	J
.30	.27	.23	.010	.042	.020	.100	.05	.05
7.62	6.86	5.84	0.25	1.07	0.51	2.54	1.27	1.27
K	L	M	N	P	Q	R	S	wt
.020	.036	.26	.575	.600	.125	.050	.100	grams
0.51	0.91	6.60	14.61	15.24	3.18	1.27	2.54	0.50

Demo Board MCL P/N: TB-174 Suggested PCB Layout (PL-082)



Electrical Specifications

FREQUENCY (MHz)	CONVERSION LOSS (dB)	LO-RF ISOLATION (dB)			LO-IF ISOLATION (dB)			IP3 at center band (dBm)										
		L	M	U	L	M	U											
1-600	DC-600	5.58	.06	7.0	8.5	50	30	35	25	30	20	45	35	30	20	25	15	14

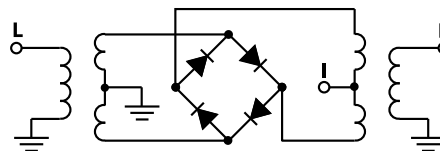
1 dB COMPR.: +1 dBm typ.

L = low range [f_l to $10 f_l$]
M = mid band [$2f_l$ to $f_l/2$]
U = upper range [$f_u/2$ to f_u]

Typical Performance Data

Frequency (MHz)	Conversion Loss (dB)		Isolation L-R (dB)	Isolation L-I (dB)	VSWR RF Port (:1)	VSWR LO Port (:1)
	LO	RF	LO	LO	LO	LO
1.00	31.00	5.34	41.73	40.78	1.15	3.01
5.00	35.00	5.14	43.83	48.03	1.12	2.92
10.00	40.00	5.10	44.31	49.23	1.10	2.87
20.00	50.00	5.10	43.27	47.31	1.09	2.86
50.00	80.00	5.07	41.89	43.53	1.08	2.67
100.00	70.00	4.98	41.22	41.32	1.08	2.75
124.93	94.93	5.07	40.40	38.91	1.06	2.68
166.24	136.24	5.14	40.04	37.11	1.04	2.68
207.55	177.55	5.19	39.72	36.06	1.03	2.64
228.21	198.21	5.11	39.43	34.77	1.01	2.61
269.52	239.52	5.17	39.11	33.40	1.03	2.72
310.83	280.83	5.34	38.68	32.44	1.06	2.70
352.14	322.14	5.31	36.90	31.98	1.10	2.84
372.79	342.79	5.36	34.94	31.09	1.15	3.08
414.10	384.10	5.33	33.57	31.83	1.20	3.20
455.41	425.41	5.57	32.53	31.14	1.26	3.16
496.72	466.72	5.67	30.97	29.46	1.31	3.29
538.03	508.03	5.75	30.78	28.57	1.34	3.28
558.69	528.69	5.72	29.47	27.11	1.40	3.48
600.00	570.00	5.82	28.98	25.59	1.47	3.57

Electrical Schematic

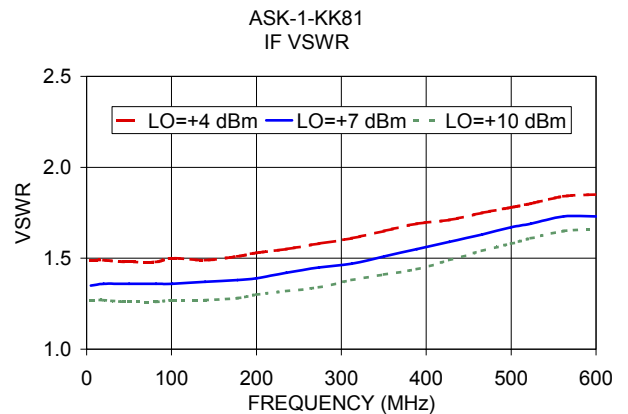
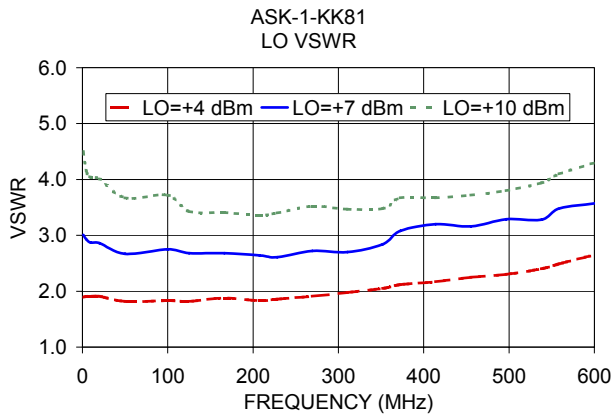
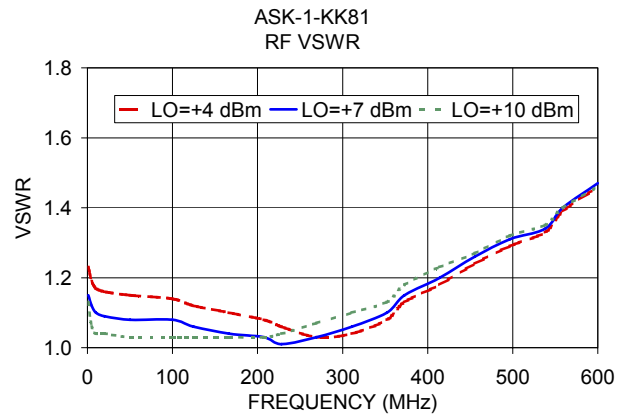
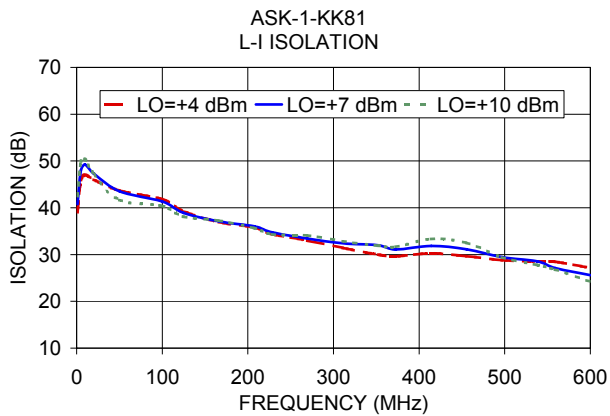
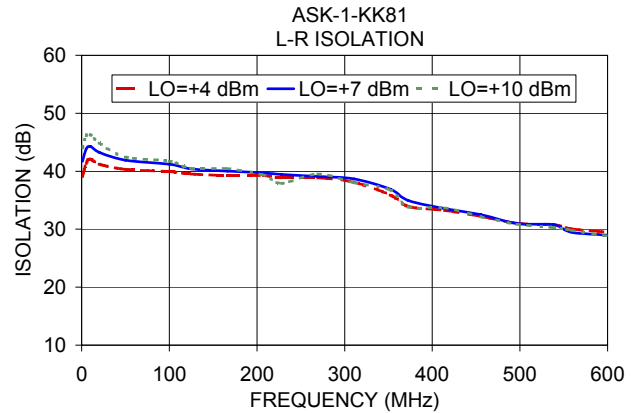
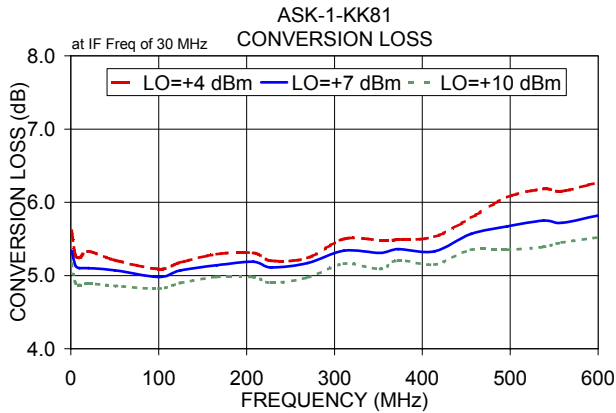


Notes

- Performance and quality attributes and conditions not expressly stated in this specification document are intended to be excluded and do not form a part of this specification document.
- Electrical specifications and performance data contained in this specification document are based on Mini-Circuit's applicable established test performance criteria and measurement instructions.
- The parts covered by this specification document are subject to Mini-Circuits standard limited warranty and terms and conditions (collectively, "Standard Terms"). Purchasers of this part are entitled to the rights and benefits contained therein. For a full statement of the Standard Terms and the exclusive rights and remedies thereunder, please visit Mini-Circuits' website at www.minicircuits.com/MCLStore/terms.jsp



Performance Charts



Notes

- A. Performance and quality attributes and conditions not expressly stated in this specification document are intended to be excluded and do not form a part of this specification document.
- B. Electrical specifications and performance data contained in this specification document are based on Mini-Circuit's applicable established test performance criteria and measurement instructions.
- C. The parts covered by this specification document are subject to Mini-Circuits standard limited warranty and terms and conditions (collectively, "Standard Terms"); Purchasers of this part are entitled to the rights and benefits contained therein. For a full statement of the Standard Terms and the exclusive rights and remedies thereunder, please visit Mini-Circuits' website at www.minicircuits.com/MCLStore/terms.jsp